

# BEBONCOOL® D600 Wireless Presenter User Manual



Be sure to read this user manual before using the wireless presenter and keep it for future reference.

## WARNING!IMPORTANT!

- 1.The laser can cause permanent damage to some body parts. Please don't shine the laser to the crowd, especially to the face, most importantly to the eyes!
2. Avoid lasers pointing at mirrors or other highly reflective surfaces!
- 3.Please keep it away from Children, which can't be used as a toy.
- 4.There is lithium battery in this product, do not throw it into fire or water!
- 5.Do not use telescopes or other equipment to observe laser lights.
- 6.When attempting to disassemble, adjust or repair, please contact professional people.

## Product Charging

- 1.Built-in 300mAh Lithium battery, charged by USB cable.
- 2.When the indicator flashes continuously, it means the presenter need to be charged.
- 3.Charging time is about 1.5 hours, using time is about one week.
- 4.The indicator will be bright continuously when charging, the light will goes out when fully charged.
- 5.The presenter has auto sleep function, please press any button to wake up.



## BUTTONS GUIDANCE

### Page Flip

- 1.Press the "<"button for page up function.
- 2.Press the ">"button for page down function.

### Play/Full screen

3. Press the "⏪" button for full screen, same to escape out. (Only work for PowerPoint)

### Black Screen

4. Press the "⏪" button for full screen, same to escape out. (Only work under full screen on PowerPoint; On Win8, only work under English Input System)

## Transmitter Features:

Switch:Button

Material:ABS

Laser style: Beam light

Laser color: Green light

Radio frequency:2.4GHZ

Laser output power:<5mw

Battery:Built-in 300mAh Lithium battery charged by USB cable

Laser distance: 328foot/100m

Laser wavelength:650nm

Control distance: 10-15m (The effective distance will change with the surrounding environment)

When pressing the button with no reaction, please check the following factors:

1. The power: please charge the presenter if the power is low .

## Compatibility

1) Support PPT, keynote, prez or other commonly used software.

2) For Mac users, the presenter only support page up/ down on Keynote.

## Operation Tips:

1. Just unplug the USB dongle from the presenter, and plug it into the USB port on the computer, then it can be used.

2. When the first time using it on Mac, it may pop out a window of "Keyboard Set Assistant" and indicate the keyboard can't be recognized. At this time, please click "Continue" to complete the installing.

The operation of MAC first time identifying the presenter:

① Plug USB receiver, please click "continue" when it comes out a window as below:

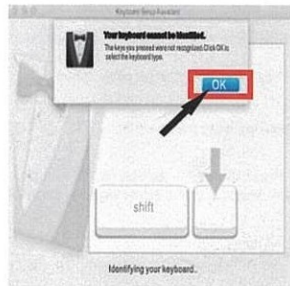


5

② Press the next page or previous page key when it comes out a window as below, and then wait for 5 seconds:

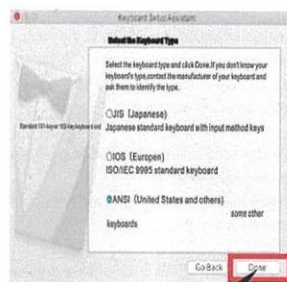


③ After your 5 second waiting, please click "OK" when it comes out a window as below:



6

④ Please select ANSI option and click "done" when it comes out a window as below:



⑤ Re-identify  
Choose [System Preferences]



7

Choose [Change Keyboard Type...]



Repeat step ①②③④

3. If you accidentally close the pop up window for the first time using on Mac, please follow the step of picture 5 and 6, then follow step 1.2.3.4.

Customer Service:  
36-Month warranty  
45-Day Return  
75-Day Replacement

8